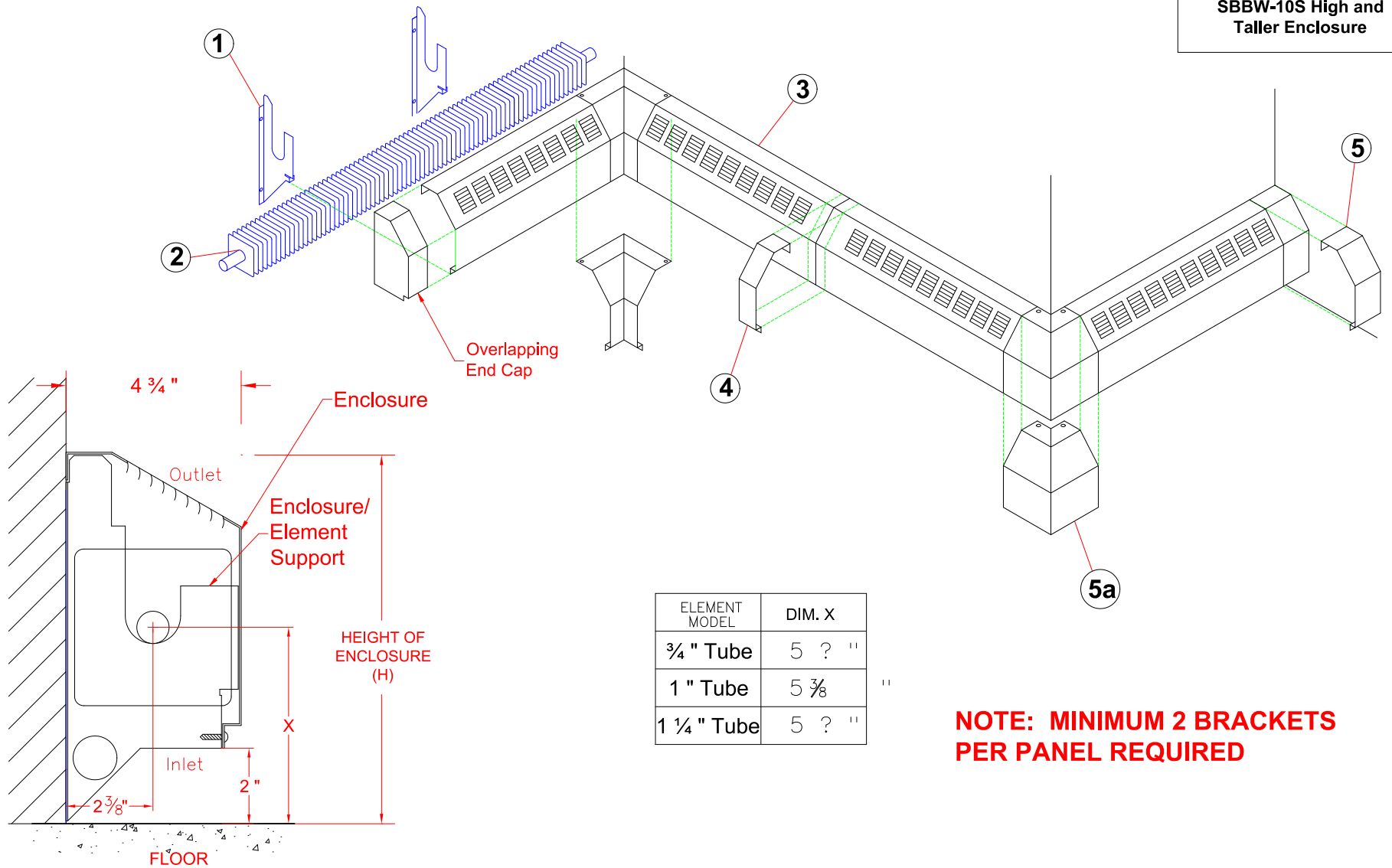


SBBW-10S High and Taller Enclosure



**NOTE: MINIMUM 2 BRACKETS PER PANEL REQUIRED**

- ① Fasten element support/bracket to wall and against floor.
- ② Install heating element onto element supports, ensure tubing rests on cradle.
- ③ Place top of enclosure panel on to back of element support then fasten bottom of panel into element bracket.
- ④ For 2 or more side by side enclosure panels, slide top of 2" trim into gap between top of panel and wall, swing trim down and fasten into bottom of enclosure with #10 screws.

- ⑤ Place trim strip on top of enclosure panel and fasten at bottom of enclosure. For corners (5a), fasten at top by #10 screws.