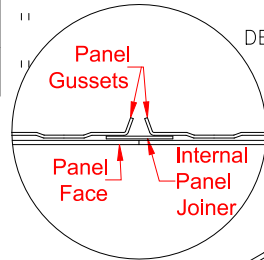


**SWE-TF-ASSY-r05**

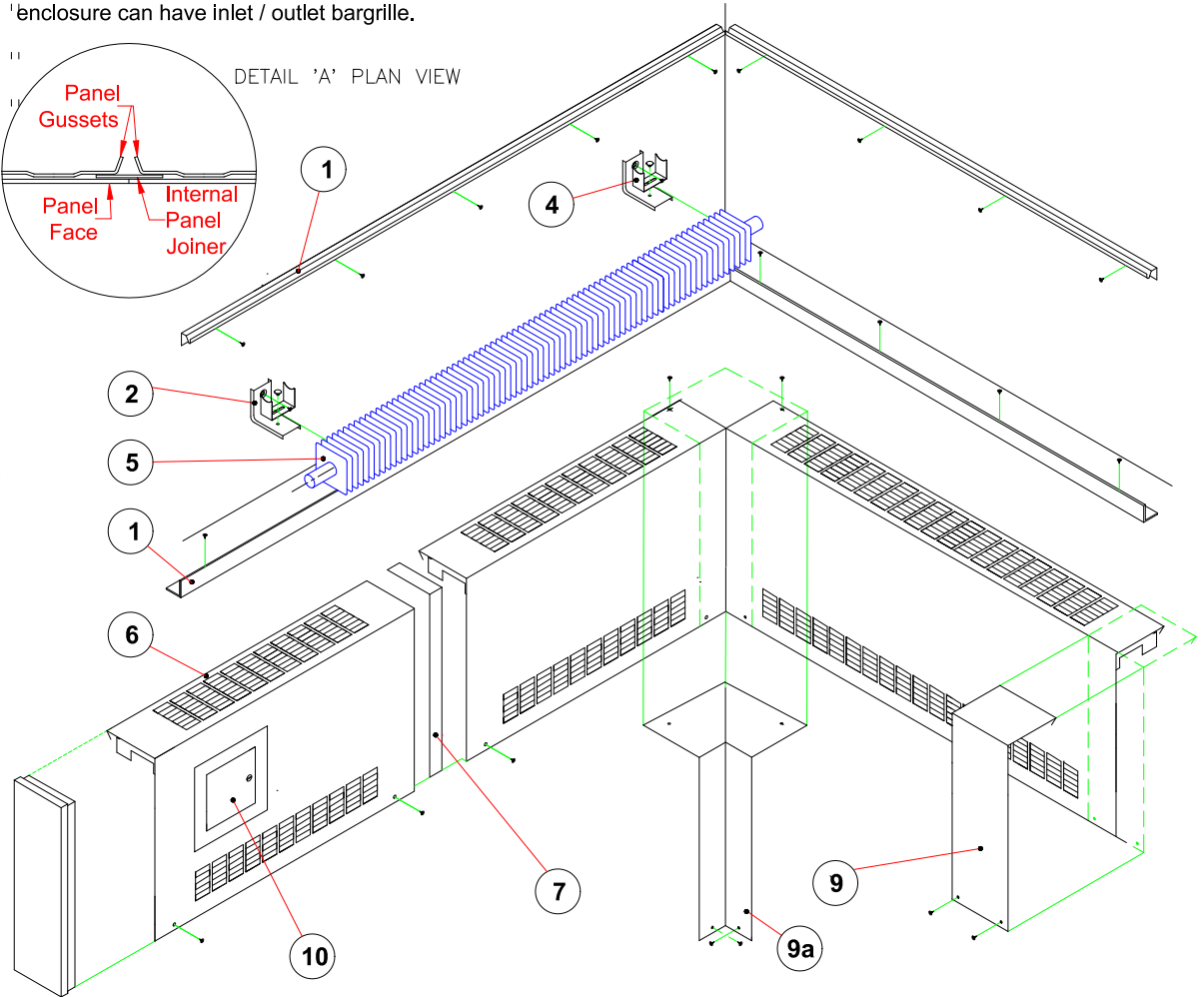
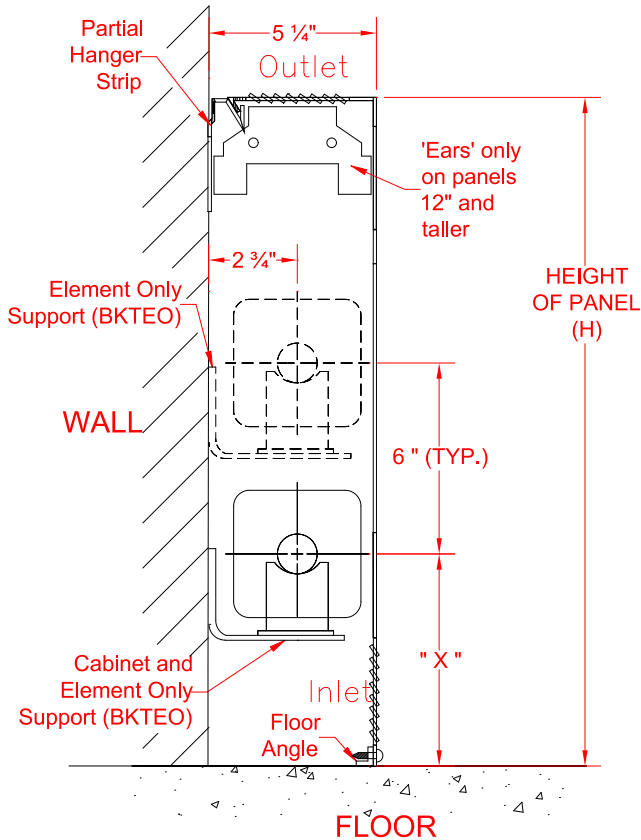
**Additional tiers of element only available on enclosure 18" and taller**

ELEMENT MODEL	DIM. X
¾" Tube	7 ¼"
1" Tube	7 ½"
1 ¼" Tube	7 ½"

**NOTE:**  
SWE-10TF with inlet / outlet bargrille is restricted to 4" x 2-3/4" element laid horizontally. Otherwise, only SWE-12TF and taller enclosure can have inlet / outlet bargrille.



DETAIL 'A' PLAN VIEW



- ① Fasten hanger strip to wall at required height. Ensure strip is level to floor. As shown fasten 1" angle to floor 5 3/16" from wall.
- ② Mount BKTEO brackets so that element center is 6" above floor.
- ③ For 2 tier elements, mount and fasten BKTEO brackets 6" center to center.
- ④ Install cradles onto brackets by placing cradle on bracket and insert the plastic fastener through the slot in the cradle into the hole in the bracket.
- ⑤ Install heating element on to BKTEO brackets, ensure tubing rests on cradle.
- ⑥ Place top of enclosure panel on to hanger strip and fasten panel to angle by #10 screws.
- ⑦ For 2 or more side by side enclosure panels, join by a panel joiner.
- ⑧ If an access panel is used, join access panel to enclosure panel by a joiner strip. (not shown)
- ⑨ Hook trim strip into hanger strip, swing trim down and fasten it to enclosure panel by #10 screws. For corners (9a), fasten at top and bottom by #10 screws.
- ⑩ If an access door is required, locate it on enclosure panel, cut out a 5 1/2" square opening and drill four 1/4" diameter holes on corners of 6 1/2" square. Mount and fasten access door assembly.