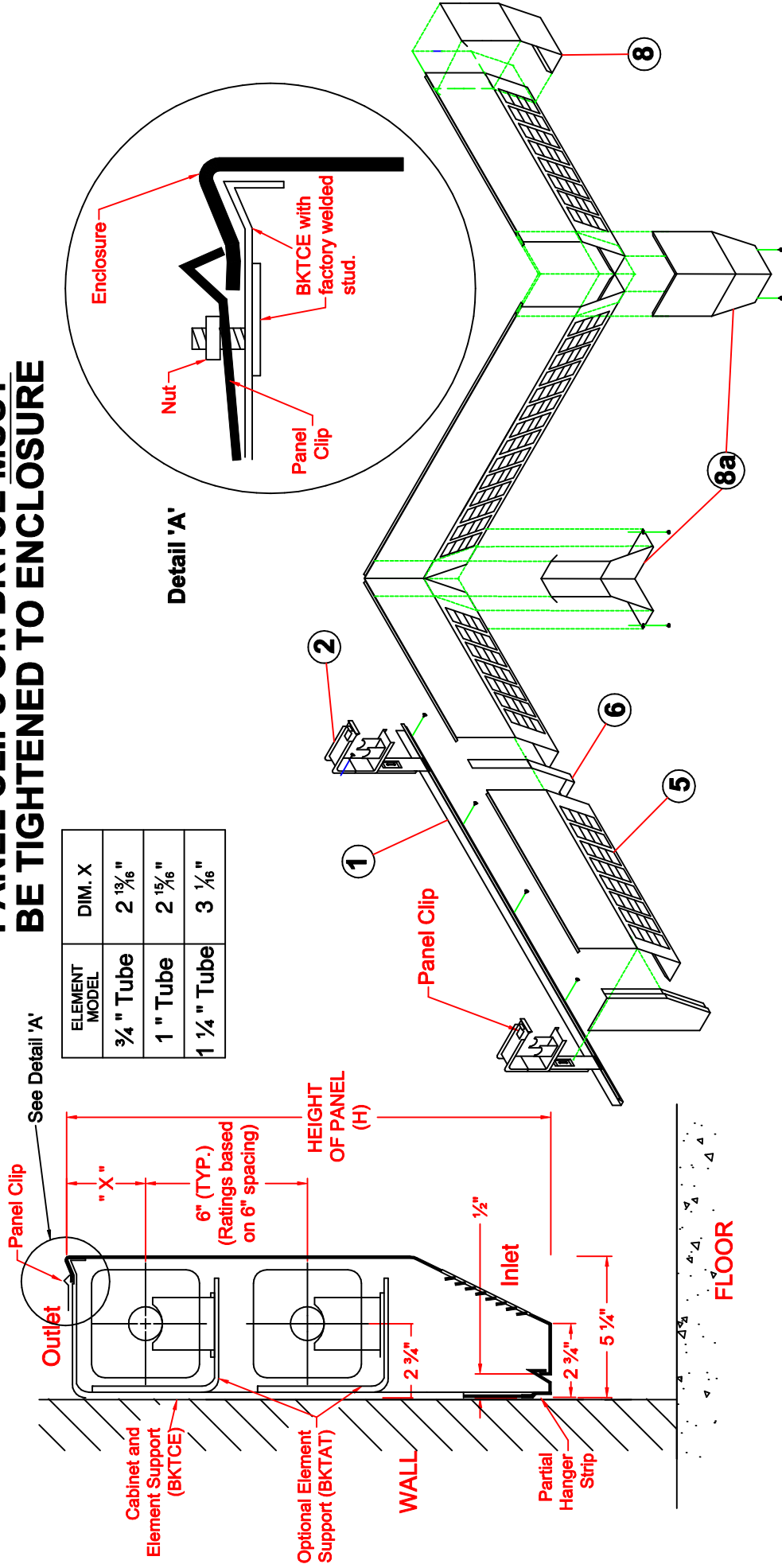


NOTE: Installation is typical for S,T,F, and X style enclosures.

PANEL CLIPS ON BKTCE MUST BE TIGHTENED TO ENCLOSURE



- ① Fasten hanger strip to wall upside down at required height. Ensure strip is level.
- ② Mount BKTCE brackets upside down, flush to and on the hanger strip. Fasten BKTAT upright to BKTCE at required distance from top end of BKTCE.
- ③ For 2 tier elements, mount and fasten additional BKTAT brackets on to the BKTCE brackets at 6" spacing.
- ④ Install heating element onto BKTAT brackets, ensure tubing rests on cradle.

- ⑤ Hook enclosure panel onto hanger strip and snap panel onto BKTCE bracket, then lock panel in by tightening panel clip onto panel.
- ⑥ For 2 or more side by side enclosure panels, join by a panel joiner.
- ⑦ If an access panel is used, join access panel to enclosure panel by a joiner strip and an additional mounting bracket. (not shown)
- ⑧ Hook trim strip on top edge of panel and swing down to hook into enclosure/hanger strip. For corners (8a), fasten at top by #10 screws.